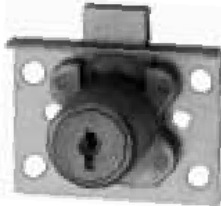




DRAWER LOCKS • Disc Tumbler



**No. 02065
Dead Bolt**

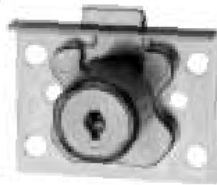
**02065 & 02065 1/2
DRAWER LOCKS**
Disc Tumbler
7/8" Can be Masterkeyed,
1 1/8" Cannot be Masterkeyed*

Material: Brass Plated Steel
Backplate, Cylinder and Bolt,
Pressure Cast
Strike: No. 26S, brass, US4 only.
Regularly furnished with locks
02068 1/2 and 02065 1/2.

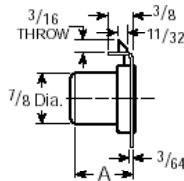
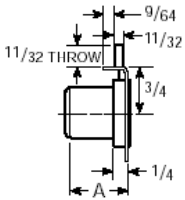
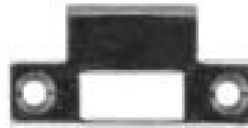
Strike: No. 7S, brass, US4 only.
Furnished only when ordered with locks
02068 and 02065.
Rekeying:



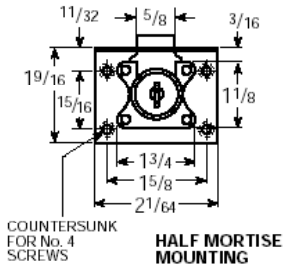
Plug removal hole added to allow for removal of plug assembly for rekeying purposes. To remove plug, insert key and rotate 90 degrees. Insert end of small tool (e.g., paper clip) into access hole and depress retainer while pulling key and plug out.



**No. 02065 1/2
Latch Bolt**



For Thickness of Material (A)		Regular Key Changes	Key Blank No.
Regular	Also Available		
7/8"	1 1/8"	200	5865JVR (5 Disc)
	1 1/8"	700	8658JVR (6 Disc)



Buy Online:
www.MrLock.com