

CAM LOCKS • Disc Tumbler



**15751, 15752, 15753,
& 15760**

CAM LOCKS Disc Tumbler

Can be Masterkeyed

Material: Pressure cast

Regular Key Changes: 200 with key blank **5865JVR** (5 disc), 700 with key blank **8658JVR** (6 disc)

Masterkeyed Key Changes: 180 with key blank **5860KS** (5 disc), 700 with key blank **5861KS** (6 disc)

Cams: See dimension in table. Cams measured from center of cylinder to end of cam. Other cam options on Page 16.

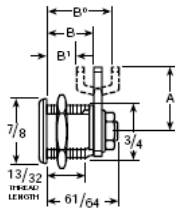
Cam Positions: Regularly furnished with cam mounted at 12 o'clock locked position. Cam may be mounted at 3, 6, 9, or 12 o'clock locked position. Specify on order.

Cam Rotation: Regular rotation 90 degrees from 12 to 9 o'clock, key removable only in locked position at 12. Also available with 180 degree rotation from 12 to 6 o'clock so key can be withdrawn in both locked and unlocked positions. Specify when ordering.

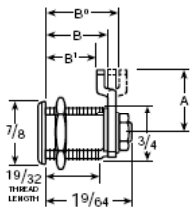
Cylinder: Slabbed on both sides

Clip: No. **15751** also available with Clip (Page 15). Specify No. **C15751** for 18, 20, and 22 gauge metal.

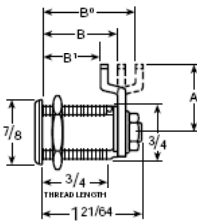
MrLock.com
Security Hardware Supply



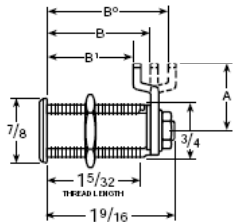
No. 15751



No. 15752

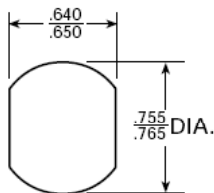


No. 15753



No. 15760

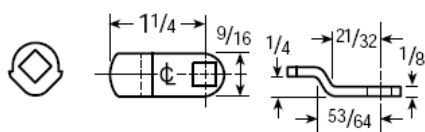
MOUNTING CUTOUT



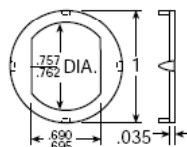
Cam No.	Cam Length	No. 15751*			No. 15752*			No. 15753*			No. 15760*		
		Distance Under Head to Cam			Distance Under Head to Cam			Distance Under Head to Cam			Distance Under Head to Cam		
		B	B'	B''	B	B'	B''	B	B'	B''	B	B'	B''
C2S	7/8"	5/8"			13/16"			1"			1 1/4"		
C2L	1 1/4"	5/8"			13/16"			1"			1 1/4"		
C3S	7/8"		1/2"			11/16"			7/8"			1 1/8"	
C3L	1 1/4"		1/2"			11/16"			7/8"			1 1/8"	
C4S	7/8"		3/8"			9/16"			3/4"			1"	
C4L	1 1/4"		3/8"			9/16"			3/4"			1"	
C5S	7/8"			3/4"			15/16"			1 1/8"			1 3/8"
C5L	1 1/4"			3/4"			15/16"			1 1/8"			1 3/8"
C6S	7/8"			7/8"			1 1/16"			1 1/4"			1 1/2"
C6L	1 1/4"			7/8"			1 1/16"			1 1/4"			1 1/2"

*Specify cam required on order, i.e., 15751 x C2S.

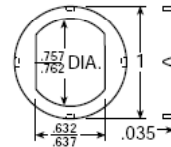
Part No./Cyl Length	Stock ID No.	MKYD	LIST PRICE EACH			Stock Qty.	Approx. Boxed Wt. (lbs./ oz.)
			US4	US26D			
15751							
B15751 KD	00218				25	5/9	
B15751 KA - CAT30	00219				25	5/9	
B15751 CAT60	02656				25	5/9	
B15751 AUE1	02657				25	5/9	
B15751 MKY M8003(KD)	02654				25	5/9	
B15751							
C15751							
15752							
B15752 KD	02645				25	5/9	
B15752 KA - CAT30	02660				25	5/9	
B15752 CAT60	02661				25	5/9	
B15752 MKY M8003(KD)	02662				25	5/9	
B15752							
15753							
15760							
B15760 KD	00220				25	5/9	
B15760 KA - CAT30	02908				25	5/9	
B15760 CAT60	02659				25	5/9	
B15760 AUE1	02664				25	5/9	
B15760 MKY M8003(KD)	02665				25	5/9	
B15760							
K15760 Cam Lock, KD, Carded	00222				8	2/2	
K15760A Cam Lock, KA - CAT30, Carded	00223				8	2/2	
K15760 Carded							
K15760A KA - CAT30, Carded							



121F42
180° Stop Cam



230F24
Pronged Washer



231F55
Escutcheon

Bulk Pack: B15751, B15752, & B15760 locks are individually polybagged in US26D, keyed different, keyed alike, and masterkeyed. Each lock is assembled with C2L cam, 12 to 9 rotation, and 2 keys. Accessories also included in polybag are shown at left.

Notes:

- Stock items are not shaded and are available in stock quality units only. Use Stock ID No. when ordering stock items.
- Made - To - Order items are shaded.
- For explanation of finishing symbols, refer to Page 1.