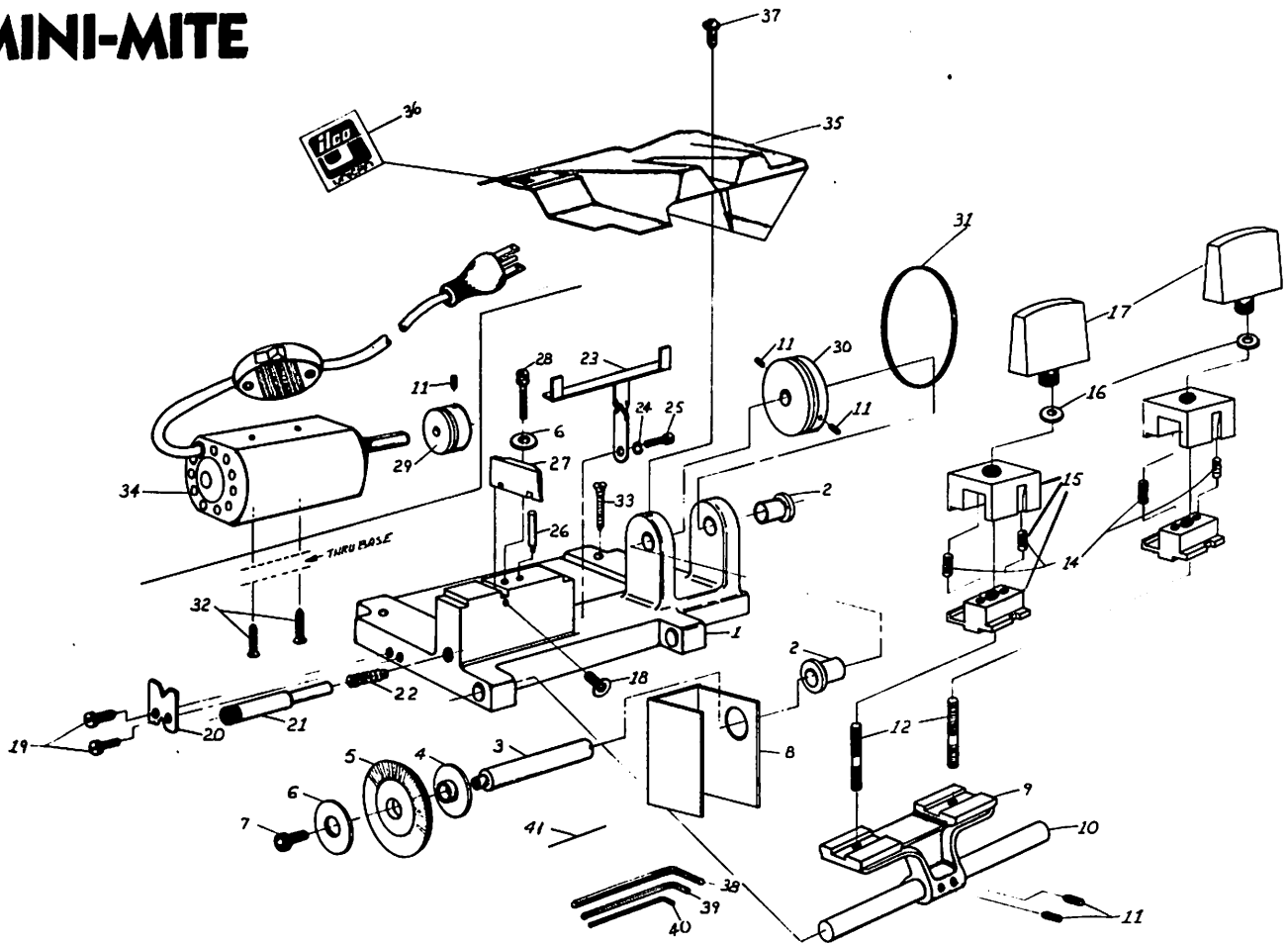


008-50-44 MINI-MITE



Ref. No.	Part No.	Description	Qty. Per Machine
2	101915	190-12 Bronze Bearing	2
3	129704	008-Cutter Shaft	1
4	129702	008 Cutter Spacer	1
5	BC0017XXXX	23RF Cutter	1
6	B2442003	190-2 Stylus Washer	2
7	174285	10-32 x 3/4 - 2A LF Socket Cap Screw	1
8	10382IU	008 Chip Deflector	1
9	B2419401	008 Key Machine Carriage	1
10	129231	190-10 Carriage Spindle	1
11	174449	S2 Set Screws, 10-32 x 1/4	5
12	B2572109	3-57 Key Clamp Stud	2
14	184003	2584 Vise Springs (3-136E)	4
15	BC0700XXXX	2584 Repl. Vise Jaw Assy.	2
16	BC0230XXXX	1-59 Thrust Bearings, includes Thrust Washers (4 ea.) Thrust Retainers (2 ea.)	2
17	103780U	2584 Wing Nut Assy.	2
18	B2414419	2584 Guide Adj. Screw	1
19	174610	8-32 x 3/8 PN-HD Self Tap	2
20	129701	008 Key Rake	1
21	B2415402	008 Gage Fork Shaft	1
22	B2575472	Gage Fork Spring, 008	1
23	103820U	008 Gage Fork Complete	1

Ref. No.	Part No.	Description	Qty. Per Machine
24	194206	#8 Lockwasher-Helical SPR	1
25	174277	8-32 x 1/2 Socket Cap Screw	1
26	B2446001	190-3 Stylus Pin	1
27	B2415409	008 Stylus	1
28	174690	S-50 Cap Screw, 10-32 x 1	1
29	B2415405	008 Motor Pulley	1
30	B2415404	008 Cutter Shaft Pulley	1
31	129243	190-16 Drive Belt	1
32	170306	10-32 x 9/16 FHMS	2
33	175430	190-27 FHMS, #10 x 1 1/4 Wood Screw	3
34	129315	008 Key Machine Motor, 110 Volt	1
35	B2565470	008 Key Machine Hood	1
37	172314	10-32 x 5/16 RHMS	1
38	129074	K-2 Hex Key	1
39	129161	K-8 Hex Key	1
40	129014	K-1 Hex Key	1
41	B2572085	3-62F Straight Wire	2
N. S.	129316	008 Motor 12V DC	1
N. S.	129705	008 Alligator Clip (For 12 Volt)	2
N. S.	129706	008 Clip Insulator (For 12 Volt)	2
N. S.	129314	008 Motor 220 Volt	1